

Town and Country Planning (General Permitted Development) (England) Order 1995

Town and County Planning (General Permitted Development) (Amendment) (England) Order 2015

Notice of Direction without immediate effect made under Article 4 (1) to which paragraph 1 of Schedule 3 applies

Stevenage Borough Council (“the Borough Council”) has made a Direction under Article 4(1) of the Town and Country Planning (General Permitted Development) Order 2015, as amended (“the General Permitted Development Order”).

The Direction relates to development comprising the change of use of a building from a use falling within Class E(g)(iii) (light industrial) of the Schedule to the Town and Country Planning (Use Classes) Order 1987 as amended, to a use falling within Class C3 (dwellinghouses) of that Order and removes permitted development rights under Class MA Part 3 to Schedule 2 of the General Permitted Development Order for this type of development from the date when the Direction comes into force.

The Article 4 Direction applies to the 12 sites within Pin Green Employment Area, and 42 individual sites in Gunnels Wood Employment Area as shown edged and hatched red on the plans attached to the Direction. A copy of the Direction, including a map defining the areas covered, can be viewed at the Stevenage Borough Council Offices in Danestrete, Stevenage Central Library at Southgate and the Old Town Library at 38 High Street or on the Council’s website at www.stevenage.gov.uk/.

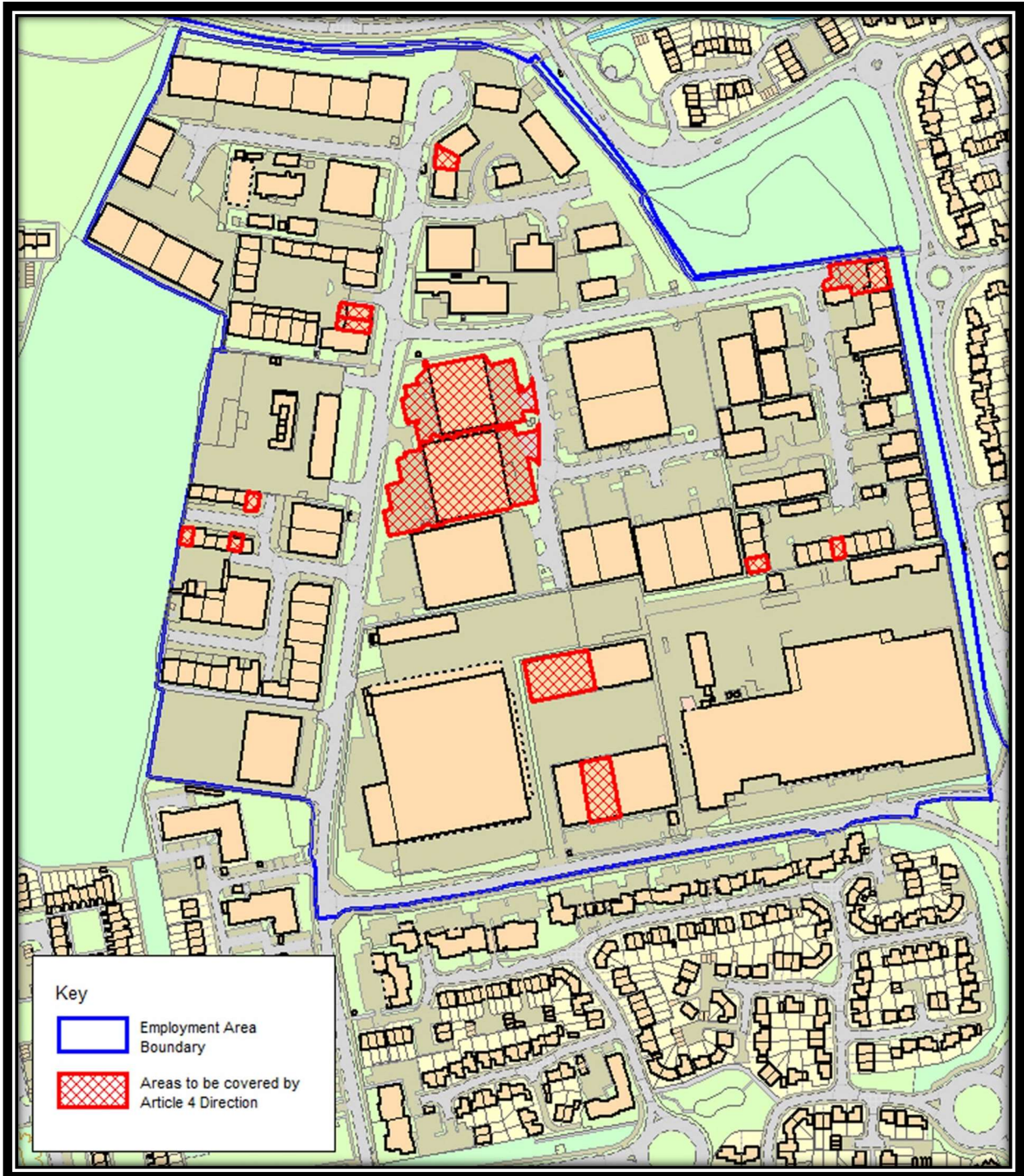
Representations concerning the Article 4 Direction may be made from 22 January to 18 February 2025, via <https://forms.office.com/e/HTwYPT70ip>, by email to planningpolicy@stevenage.gov.uk or by post to Planning Policy Team, Stevenage Borough Council, Daneshill House, Danestrete, Stevenage, Hertfordshire, SG1 1HN.

The Article 4 Direction will come into force, subject to confirmation by the Borough Council, on the 19 March 2025, once the Direction is confirmed.

Matt Partridge
Chief Executive

Dated 22 January 2025

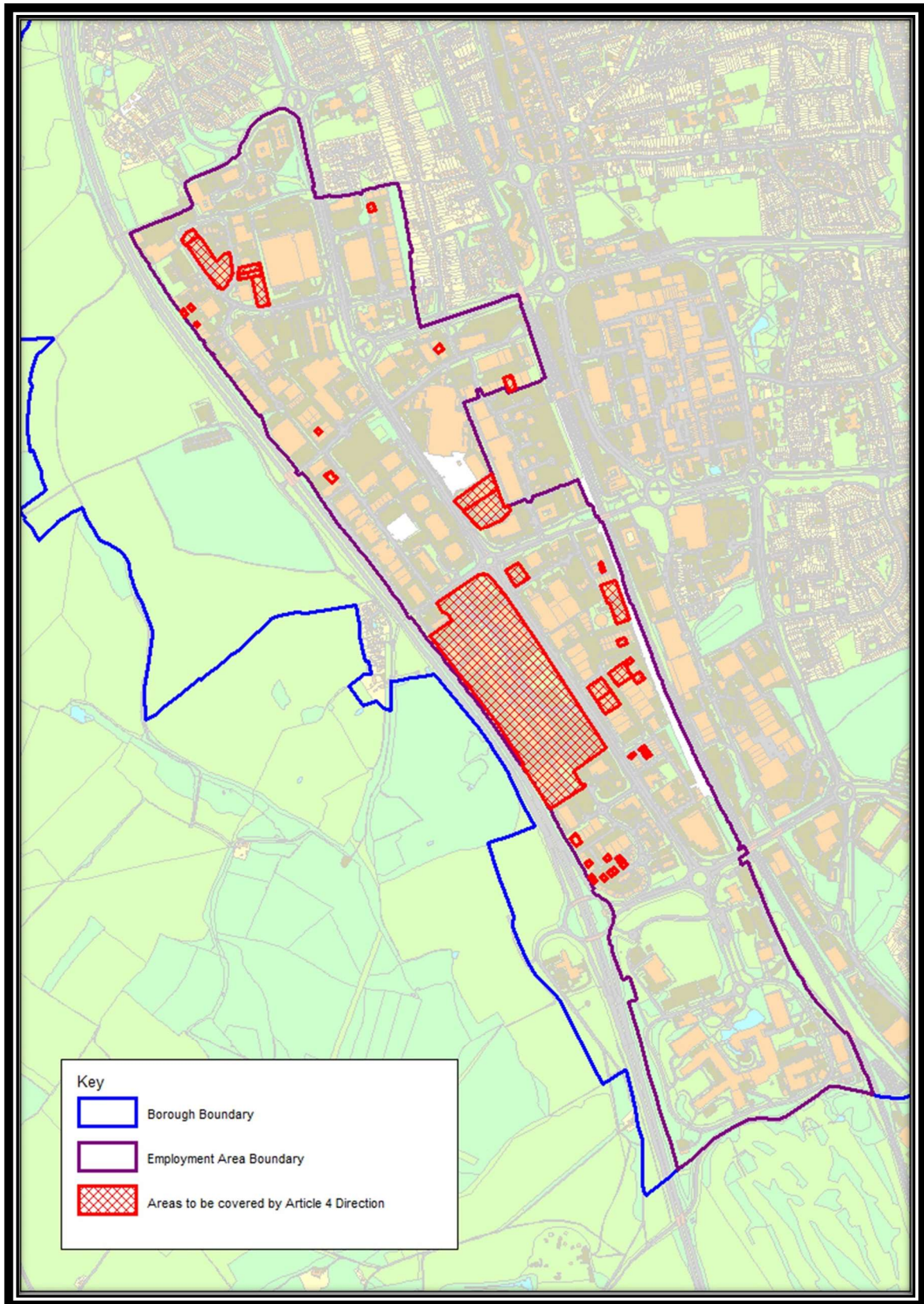
Pin Green Employment Area



Address				Use Class
Unit 28	Wedgwood Way	Stevenage	SG1 4QT	E(g)(iii) industrial processes
Unit 29	Wedgwood Way	Stevenage	SG1 4QT	E(g)(iii) industrial processes
Unit 17, Wedgwood Gate Industrial	Wedgwood Way	Stevenage	SG1 4SU	E(g)(iii) industrial processes

Estate				
Unit 21, Wedgwood Gate Industrial Estate	Wedgwood Way	Stevenage	SG1 4SU	E(g)(iii) industrial processes
Unit 25, Wedgwood Gate Industrial Estate	Wedgwood Way	Stevenage	SG1 4SU	E(g)(iii) industrial processes
Unit 3, Wedgwood Court	Wedgwood Way	Stevenage	SG1 4QR	E(g)(iii) industrial processes
Unit 11 Parsons Green Estate	Boulton Road	Stevenage	SG1 4QG	E(g)(iii) industrial processes
Unit 15 Parsons Green Estate	Boulton Road	Stevenage	SG1 4QG	E(g)(iii) industrial processes
Unit 22	Boulton Road	Stevenage	SG1 4QX	E(g)(iii) industrial processes
Unit 9 – 10	Eastman Way	Stevenage	SG1 4QT	E(g)(iii) industrial processes
Unit 2	Cartwright Road	Stevenage	SG1 4QJ	E(g)(iii) industrial processes
Unit 5 – 6	Cartwright Road	Stevenage	SG1 4QJ	E(g)(iii) industrial processes

Gunnels Wood Employment Area



Address				Use Class
Unit 5	Leyden Road	Stevenage	SG1 2BW	E(g)(iii) Industrial Processes
Unit 6	Leyden Road	Stevenage	SG1 2BW	E(g)(iii) Industrial Processes
Unit 8	Leyden Road	Stevenage	SG1 2BW	E(g)(iii) Industrial Processes
Unit 9	Leyden Road	Stevenage	SG1 2BW	E(g)(iii) Industrial Processes
MBDA	Gunnels Wood Road	Stevenage	SG1 2DA	E(g)(iii) Industrial Processes
Astrium	Gunnels Wood Road	Stevenage	SG1 2BH	E(g)(iii) Industrial Processes
Sanders Buiding	Gunnels Wood Road	Stevenage	SG1 2BH	E(g)(iii) Industrial Processes
Gunnels Wood Road Building	Gunnels Wood Road	Stevenage	SG1 2BH	E(g)(iii) Industrial Processes
Unit N-O, Gunnels Wood Park	Gunnels Wood Road	Stevenage	SG1 2BH	E(g)(iii) Industrial Processes
Unit 1-2, Gunnels Wood Park	Gunnels Wood Road	Stevenage	SG1 2BH	E(g)(iii) Industrial Processes
Unit 3-4, Gunnels Wood Park	Gunnels Wood Road	Stevenage	SG1 2BH	E(g)(iii) Industrial Processes
Unit 8-9, Gunnels Wood Park	Gunnels Wood Road	Stevenage	SG1 2BH	E(g)(iii) Industrial Processes
Unit 16-17, Gunnels Wood Park	Gunnels Wood Road	Stevenage	SG1 2BH	E(g)(iii) Industrial Processes
Unit 21, Gunnels Wood Park	Gunnels Wood Road	Stevenage	SG1 2BH	E(g)(iii) Industrial Processes
GlaxoSmithKline	Gunnels Wood Road	Stevenage	SG1 2BH	E(g)(iii) Industrial Processes
Unit B, Gateway 1000, Arlington Business Park	Whittle Way	Stevenage	SG1 2FP	E(g)(iii) Industrial Processes
Unit C, Gateway 1000, Arlington Business Park	Whittle Way	Stevenage	SG1 2FP	E(g)(iii) Industrial Processes
Unit D, Gateway 1000, Arlington Business Park	Whittle Way	Stevenage	SG1 2FP	E(g)(iii) Industrial Processes
Unit F, Gateway 1000, Arlington Business Park	Whittle Way	Stevenage	SG1 2FP	E(g)(iii) Industrial Processes

Unit G, Gateway 1000, Arlington Business Park	Whittle Way	Stevenage	SG1 2FP	E(g)(iii) Industrial Processes
Unit H, Gateway 1000, Arlington Business Park	Whittle Way	Stevenage	SG1 2FP	E(g)(iii) Industrial Processes
Unit J, Gateway 1000, Arlington Business Park	Whittle Way	Stevenage	SG1 2FP	E(g)(iii) Industrial Processes
Unit K, Gateway 1000, Arlington Business Park	Whittle Way	Stevenage	SG1 2FP	E(g)(iii) Industrial Processes
Unit 7, The IO Centre, Arlington Business Park	Whittle Way	Stevenage	SG1 2BD	E(g)(iii) Industrial Processes
Unit 9, The IO Centre, Arlington Business Park	Whittle Way	Stevenage	SG1 2BD	E(g)(iii) Industrial Processes
Unit 12, The IO Centre, Arlington Business Park	Whittle Way	Stevenage	SG1 2BD	E(g)(iii) Industrial Processes
Balbir House, Vishkarma Park	Norton Green Road	Stevenage	SG1 2LP	E(g)(iii) Industrial Processes
Unit 3, Modular Business Park	Norton Green Road	Stevenage	SG1 2FZ	E(g)(iii) Industrial Processes
Phosphor Technology Ltd Site	Norton Green Road	Stevenage	SG1 2FZ	E(g)(iii) Industrial Processes
Unit 2, Caxton Place	Caxton Way	Stevenage	SG1 2UG	E(g)(iii) Industrial Processes
Unit 4, Bowmans Trading Estate	Bessemer Drive	Stevenage	SG1 2DL	E(g)(iii) Industrial Processes
Unit B, Argyle Gate	Argyle Way	Stevenage	SG1 2AD	E(g)(iii) Industrial Processes
Unit 8	Fulton Close	Stevenage	SG1 2AF	E(g)(iii) Industrial Processes
Unit 6, Hyatt Trading Estate	Babbage Road	Stevenage	SG1 2EQ	E(g)(iii) Industrial Processes
Unit 9, Hyatt Trading Estate	Babbage Road	Stevenage	SG1 2EQ	E(g)(iii) Industrial Processes
Unit 11, Hyatt Trading Estate	Babbage Road	Stevenage	SG1 2EQ	E(g)(iii) Industrial Processes
Alchemy Metals Ltd Site	Cavendish Road	Stevenage	SG1 2EU	E(g)(iii) Industrial Processes
Kalstan Engineering Ltd Site	Cavendish Road	Stevenage	SG1 2ET	E(g)(iii) Industrial Processes
Stevenage Glass Company Site	Cavendish Road	Stevenage	SG1 2EU	E(g)(iii) Industrial Processes

National Pile Croppers Site	Crompton Road	Stevenage	SG1 2EE	E(g)(iii) Industrial Processes
Stanley J Murphy Site	Crompton Road	Stevenage	SG1 2EE	E(g)(iii) Industrial Processes
Unit 3, The Orbital Centre	Cockerell Close	Stevenage	SG1 2NB	E(g)(iii) Industrial Processes