

Town and Country Planning (General Permitted Development) (England) Order 1995

Town and County Planning (General Permitted Development) (Amendment) (England) Order 2015

Notice of Direction without immediate effect made under Article 4 (1) to which paragraph 1 of Schedule 3 applies

Stevenage Borough Council (“the Borough Council”) has made a Direction under Article 4(1) of the Town and Country Planning (General Permitted Development) Order 2015, as amended (“the General Permitted Development Order”).

The Direction relates to development comprising the change of use of a building from a use falling within Class E(g)(i) (offices) of the Schedule to the Town and Country Planning (Use Classes) Order 1987 as amended, to a use falling within Class C3 (dwellinghouses) of that Order and removes permitted development rights under Class MA Part 3 to Schedule 2 of the General Permitted Development Order for this type of development from the date when the Direction comes into force.

The Article 4 Direction applies to the 7 individual sites within Pin Green Employment Area, and 66 individual sites in Gunnels Wood Employment Area as show edged and hatched red on the plans attached to the Direction. A copy of the Direction, including a map defining the areas covered, can be viewed at the Stevenage Borough Council Offices in Danestrete, Stevenage Central Library at Southgate and the Old Town Library at 38 High Street or on the Council’s website at www.stevenage.gov.uk.

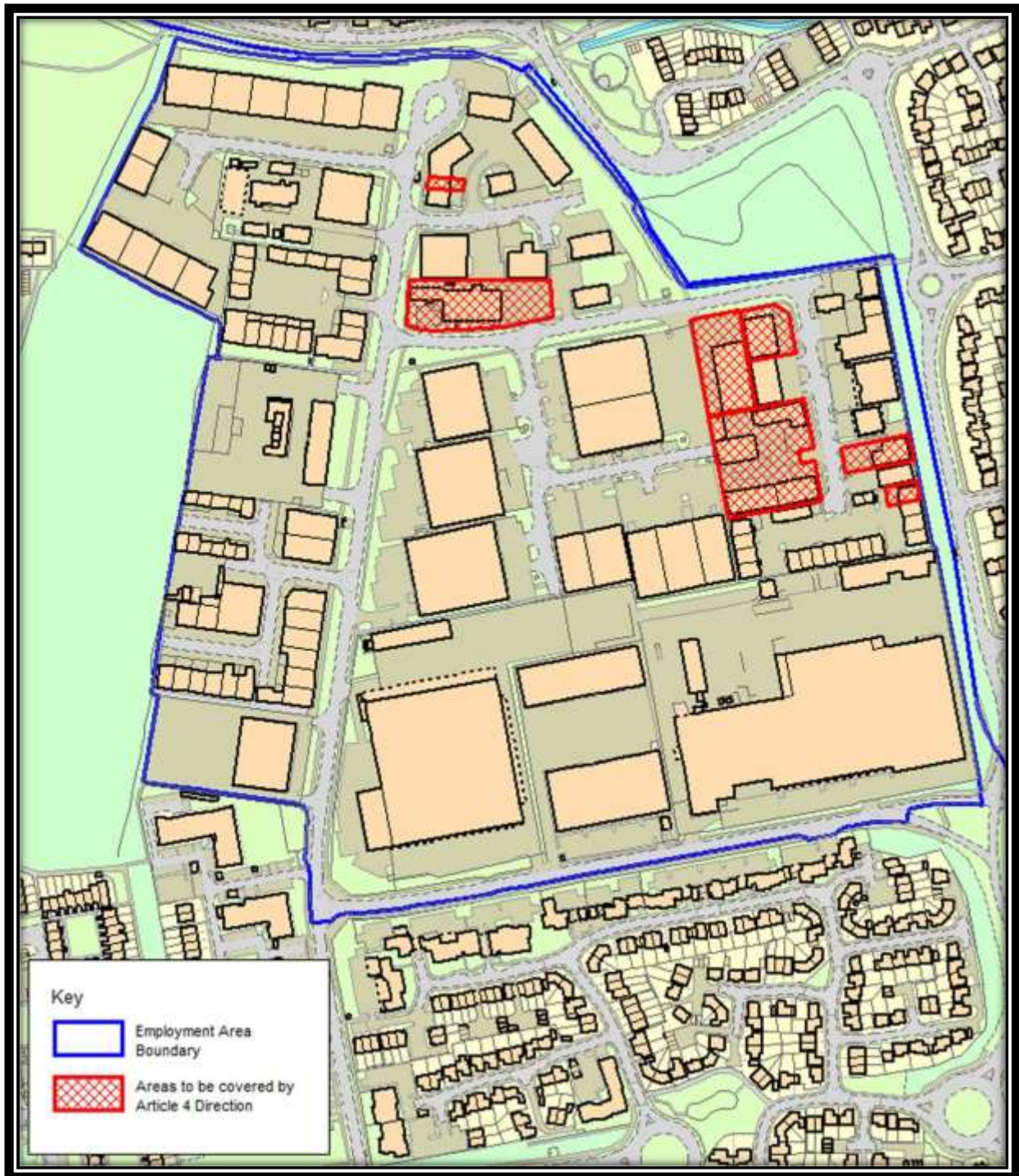
Representations concerning the Article 4 Direction may be made from 22 January to 18 February 2025, via <https://forms.office.com/e/HTwYPT70ip>, by email to planningpolicy@stevenage.gov.uk or by post to Planning Policy Team, Stevenage Borough Council, Daneshill House, Danestrete, Stevenage, Hertfordshire, SG1 1HN.

The Article 4 Direction will come into force, subject to confirmation by the Borough Council, on the 19 March 2025, once the Direction is confirmed.

Matt Partridge
Chief Executive

Dated 22 January 2025

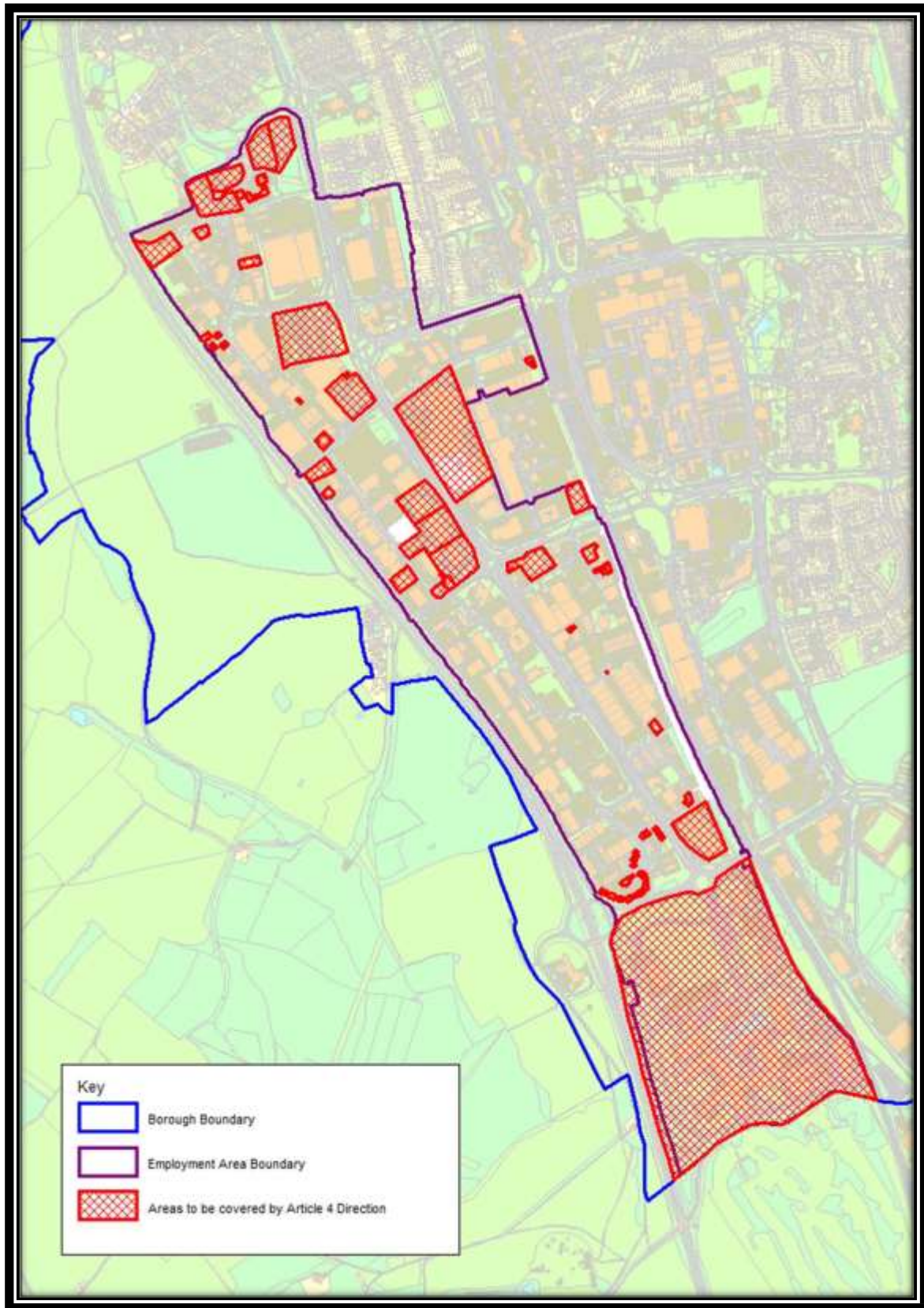
Pin Green Employment Area



Address	-	-	-	Use Class
Unit 2, Wedgwood Court	Wedgwood Way	Stevenage	SG1 4QR	E(g)(i) offices
3 Parson Green Estate	Boulton Road	Stevenage	SG1 4QG	E(g)(i) offices
Unit 1	Boulton Road	Stevenage	SG1 4QX	E(g)(i) offices

Address	-	-	-	Use Class
Unit 21	Boulton Road	Stevenage	SG1 4QL	E(g)(i) offices
Aston House	Boulton Road	Stevenage	SG1 4QX	E(g)(i) offices
Britannia House	Boulton Road	Stevenage	SG1 4QX	E(g)(i) offices
Niall House	Boulton Road	Stevenage	SG1 4QX	E(g)(i) offices

Gunnels Wood Employment Area



Address	-	- -	- -	Use Class
Cagex House	Leyden Road	Stevenage	SG1 2BP	E(g)(i) offices
MBDA Site	Gunnels Wood Road	Stevenage	SG1 2DA	E(g)(i) offices
Robertson House	Gunnels Wood Road	Stevenage	SG1 2FQ	E(g)(i) offices
Farnham House	Gunnels Wood Road	Stevenage	SG1 2FQ	E(g)(i) offices
Abel Smith House	Gunnels Wood Road	Stevenage	SG1 2FQ	E(g)(i) offices
Airbus Site	Gunnels Wood Road	Stevenage	SG1 2AS	E(g)(i) offices
Unit 4, Access Business Park	Gunnels Wood Road	Stevenage	SG1 2GR	E(g)(i) offices
Park Managers Office, Gunnels Wood Park	Gunnels Wood Road	Stevenage	SG1 2BH	E(g)(i) offices
Redemption House, Gunnels Wood Park	Gunnels Wood Road	Stevenage	SG1 2TA	E(g)(i) offices
GlaxoSmithKline Site	Gunnels Wood Road	Stevenage	SG1 2BH	E(g)(i) offices
Unit 1, Gateway 1000, Arlington Business Park	Whittle Way	Stevenage	SG1 2FP	E(g)(i) offices
Unit 2, Gateway 1000, Arlington Business Park	Whittle Way	Stevenage	SG1 2FP	E(g)(i) offices
Unit 3, Gateway 1000, Arlington Business Park	Whittle Way	Stevenage	SG1 2FP	E(g)(i) offices
Unit 4, Gateway 1000, Arlington Business Park	Whittle Way	Stevenage	SG1 2FP	E(g)(i) offices
Unit 5, Gateway 1000, Arlington Business Park	Whittle Way	Stevenage	SG1 2FP	E(g)(i) offices
Unit 6, Gateway 1000, Arlington Business Park	Whittle Way	Stevenage	SG1 2FP	E(g)(i) offices
Unit 7, Gateway 1000, Arlington Business Park	Whittle Way	Stevenage	SG1 2FP	E(g)(i) offices
Unit 8, Gateway 1000, Arlington Business Park	Whittle Way	Stevenage	SG1 2FP	E(g)(i) offices
Unit 9, Gateway 1000, Arlington Business Park	Whittle Way	Stevenage	SG1 2FP	E(g)(i) offices
Unit 10, Gateway 1000, Arlington Business Park	Whittle Way	Stevenage	SG1 2FP	E(g)(i) offices

Address				Use Class
Unit 11, Gateway 1000, Arlington Business Park	Whittle Way	Stevenage	SG1 2FP	E(g)(i) offices
Unit 12, Gateway 1000, Arlington Business Park	Whittle Way	Stevenage	SG1 2FP	E(g)(i) offices
Unit 13, Gateway 1000, Arlington Business Park	Whittle Way	Stevenage	SG1 2FP	E(g)(i) offices
Unit 14, Gateway 1000, Arlington Business Park	Whittle Way	Stevenage	SG1 2FP	E(g)(i) offices
Unit 15, Gateway 1000, Arlington Business Park	Whittle Way	Stevenage	SG1 2FP	E(g)(i) offices
Unit 16, Gateway 1000, Arlington Business Park	Whittle Way	Stevenage	SG1 2FP	E(g)(i) offices
Unit 17, Gateway 1000, Arlington Business Park	Whittle Way	Stevenage	SG1 2FP	E(g)(i) offices
Unit 18, Gateway 1000, Arlington Business Park	Whittle Way	Stevenage	SG1 2FP	E(g)(i) offices
Unit 2, Arlington Court, Arlington Business Park	Whittle Way	Stevenage	SG1 2FS	E(g)(i) offices
Unit 3, Arlington Court, Arlington Business Park	Whittle Way	Stevenage	SG1 2FS	E(g)(i) offices
Unit 4, Arlington Court, Arlington Business Park	Whittle Way	Stevenage	SG1 2FS	E(g)(i) offices
Unit 7, Arlington Court, Arlington Business Park	Whittle Way	Stevenage	SG1 2FS	E(g)(i) offices
Unit 8, Arlington Court, Arlington Business Park	Whittle Way	Stevenage	SG1 2FS	E(g)(i) offices
Sterling Court	Norton Green Road	Stevenage	SG1 2FZ	E(g)(i) offices
Unit 2, Modular Business Park	Norton Green Road	Stevenage	SG1 2FZ	E(g)(i) offices
Unit 4, Modular Business Park	Norton Green Road	Stevenage	SG1 2FZ	E(g)(i) offices
Six Hills Court	Norton Green Road	Stevenage	SG1 2FZ	E(g)(i) offices

Address	-	-	-	Use Class
Solar House	Kings Way	Stevenage	SG1 2UA	E(g)(i) offices
Unit 2	Caxton Way	Stevenage	SG1 2DF	E(g)(i) offices
Cambridge House, Campus 6	Caxton Way	Stevenage	SG1 2XD	E(g)(i) offices
Unit 4, Caxton Place	Caxton Way	Stevenage	SG1 2UG	E(g)(i) offices
Caxton Point Business Centre, Caxton Point	Caxton Way	Stevenage	SG1 2XU	E(g)(i) offices
EMS House, Unit 1 Bowmans Trading Estate	Bessemer Drive	Stevenage	SG1 2DL	E(g)(i) offices
Unit 17, Bowmans Trading Estate	Bessemer Drive	Stevenage	SG1 2DL	E(g)(i) offices
Business and Technology Centre	Bessemer Drive	Stevenage	SG1 2DX	E(g)(i) offices
Haden House	Argyle Way	Stevenage	SG1 2AD	E(g)(i) offices
1 Viewpoint	Babbage Road	Stevenage	SG1 2EQ	E(g)(i) offices
2 Viewpoint	Babbage Road	Stevenage	SG1 2EQ	E(g)(i) offices
3 Viewpoint	Babbage Road	Stevenage	SG1 2EQ	E(g)(i) offices
4 Viewpoint	Babbage Road	Stevenage	SG1 2EQ	E(g)(i) offices
5 Viewpoint	Babbage Road	Stevenage	SG1 2EQ	E(g)(i) offices
6 Viewpoint	Babbage Road	Stevenage	SG1 2EQ	E(g)(i) offices
7 Viewpoint	Babbage Road	Stevenage	SG1 2EQ	E(g)(i) offices
8 Viewpoint	Babbage Road	Stevenage	SG1 2EQ	E(g)(i) offices
Unit 1, Hyatt Trading Estate	Babbage Road	Stevenage	SG1 2EQ	E(g)(i) offices
Fujitsu Site	Cavendish Road	Stevenage	SG1 2DY	E(g)(i) offices
Stevenage Borough Council Depot Site	Cavendish Road	Stevenage	SG1 2ET	E(g)(i) offices
Solutions House	Crompton Road	Stevenage	SG1 2EE	E(g)(i) offices
Unit 39	Crompton Road	Stevenage	SG1 2EE	E(g)(i) offices
Avnet House	Rutherford Close	Stevenage	SG1 2EF	E(g)(i) offices
Bedford House	Rutherford Close	Stevenage	SG1 2EF	E(g)(i) offices
Essex House	Rutherford Close	Stevenage	SG1 2EF	E(g)(i) offices
Middlesex House	Rutherford Close	Stevenage	SG1 2EF	E(g)(i) offices

Address	-	-	-	Use Class
Elopak House	Rutherford Close	Stevenage	SG1 2EF	E(g)(i) offices
Meadway Court	Rutherford Close	Stevenage	SG1 2EF	E(g)(i) offices
Wiltron House	Rutherford Close	Stevenage	SG1 2EF	E(g)(i) offices