



(SADA) Annual Report

April 2022/23

Working in partnership with



What is SADA?

Survivors Against Domestic Abuse (SADA), also previously known as Stevenage Against Domestic Abuse, is a holistic approach to working alongside survivors of domestic abuse, with support also extending to families. The service offers crisis intervention, together with client-led support and signposting to other agencies suited to the individual and their own situation. We offer a range of unique service provisions including the running of 31 Safe Space homes and a refuge. We run various drop-in services, courses and events to give ongoing support to our survivors. The SADA service is county-wide and supports survivors from all areas in Hertfordshire since April 2021.



Pictures created by children for our SADA competition 2022





SADA Navigator Project

Hertfordshire County Council commissioned SADA to provide a county-wide service with a key focus on housing advice and guidance, as this had been identified as one of the biggest barriers faced by victims and survivors of domestic abuse.

The Housing Navigator Pilot has been running from 2021. Due to the success of the pilot, SADA has continued to provide the SADA service working closely with local authorities in Hertfordshire.

Stevenage and North Herts Women's Centre

We now have access to use the centre up to 3 times per week.

This space will be just for women, to complete courses and to meet in a safe and comfortable environment. This space includes a large activity area, kitchen facilities, office space, toilets and free WIFI.

The building has recently been refurbished and is ready to use for all kinds of groups and services. SADA looks forward to being able to offer the space to various partner agencies such as probation, the Advance Charity, Hacro and Safer Places.

Stevenage and North Herts Women's Centre



This space will be just for women, to complete courses, join drop in services and to meet in a safe and comfortable environment. This space includes a large activity area, kitchen facilities, office space, toilets and free WIFI.

The building has recently been refurbished and is ready to use for all kinds of groups and services. SADA look forward to being able to offer the space to various partner agencies.



For more information or to book the use of the centre please contact the team at roundmead, centre@stevenage.gov.uk or give us a call on 01438 242866 and ask for SADA.

NORTH HERTFORDSHIRE DISTRICT COUNCIL



Stevenage
BOROUGH COUNCIL



Out of hours service provision

SADA out of hours services, has allowed us to continue our support even out of office hours, enabling victims and professionals to be able to contact the team at any time, including the weekends. This is available to all professionals, clients in our refuge and SADA Safe Spaces, 24 hours a day, seven days per week.

Since 1st April 2022 we have supported 46 people through our OOH provision.

Survivors Against Domestic Abuse Panel SADAP

Our SADAP panel is unique to our service and is key to keeping people safe and sharing vital information.

Every six weeks we hold a multi-agency panel meeting (SADAP) and this is attended by external and internal partners. The purposes of this panel is to report and record low to medium risk cases of domestic abuse and ensure that we fully support all survivors of domestic abuse regardless of their risk rating.

SADA has heard a total of 565 at the panel from April 22/23.

SADA Cambridgeshire and Peterborough Project

The SADA service has been commissioned by Cambridgeshire County Council and Peterborough City Council to work on a project that allows us to collate and share feedback from children and adults who have experienced domestic abuse within Cambridge and Peterborough. The project is an opportunity for both survivors of domestic abuse and children who have been affected by domestic abuse to share their experiences.



Food Parcels and donations

Letchworth Foodbank – SADA food donations and modern slavery packs

Poplars Sainsbury's – SADA food donations and Easter Eggs

Warburtons – Collected by Poplars Sainsbury's for SADA, weekly bread donation

Councillors – Food voucher donations

Local Councillors Budgets – Fresh Food Provision and video doorbells

Letchworth and Welwyn Garden City Morrison's Stores – Food Shopping x4

Tesco Extra Stevenage Town Centre – Food Parcel

Lush – Large amounts of toiletries

GSK and the Mayor's Charity – Huge toy and gift donation

Hitchin Wates – Donation of items needed for the Safe Space homes and refuge

Many members of public and past service users – Gifts from amazon and vouchers

Serco – Gifts for refuge

Stevenage Football Club – Prize donations of tickets

Letchworth & Baldock Lions Club – Large donation of gifts, toys, food and vouchers

Herts Sports Partnership – Table Tennis Table



Projects SADA supports or runs

- You, Me, and Mum course
- White Ribbon Ambassadors
- My Bear book, bear and bags
- SADA Modern Slavery Service and essentials packs
- SADA Food and Essentials support
- SADA virtual drop in and forum
- SADA Face to Face drop in service
- Perpetrator Programme – Evolve
- Self Defence Classes



Other Support from SADA and raising awareness

Once again SADA was able to expand on its support to our community and worked hard at Christmas to supply families with festive food parcels and goodies. We supplied all the children with Christmas gifts. We sent personalised Christmas videos from the SADA Santa and elves, to all the families keeping safe in refuge and safe spaces. SADA were also lucky enough to be supported by the fabulous Stevenage Borough Bear this year in our 16 Days Of Action Campaign. We worked in partnership with the Hertfordshire Fire And Rescue Service in Stevenage to help us to raise awareness. Santa and our elves were very brave!



SADA Achievements and future projects

- Women's centre opening.
- Landlords Event to showcase the work of SADA Safe Spaces.
- Christmas provision for vulnerable families.
- Working with Cambridgeshire and Peterborough clients from external domestic abuse services.
- Regular virtual online courses and training sessions.
- New face to face drop in sessions.
- Self-defence classes in refuge and women's centre.
- Working with Evolve from the No More Service to support the launch of its Perpetrator Programme.
- Expansion on modern slavery support to North Hertfordshire

North Herts Deprivation Project

- SADA want to explore if households suffering from deprivation show high rates of domestic abuse.
- The project will enable SADA to work in those areas of North Herts where we know there is under reporting of domestic abuse.
- We will be working collaboratively with partners to support victims, survivors and those closest to them.
- We aim to bring people together and build stronger relationships between services and service users across the community.
- After meeting with local Headteachers. We have started to receive referrals from a mixture of local schools.
- We have started to co-locate in two local schools.
- We are chairing and attending regular multi agency professional meetings to discuss complex cases.
- We have placed 2 families in need into a SADA safe accommodation.
- Domestic abuse training has been completed with local schools and services.
- We have received 10 referrals and provided clients with support in the form of:
 - Provided Food Parcels
 - Provided Supermarket Vouchers
 - Provided Mobile Phones
 - Provided Safe accommodation
 - Completed HHSS referrals
 - Completed Legal Referrals
 - Attended and hosted Partner Agency Meetings
 - Liaised with partners and developed a multi-agency approach
 - Provided Long term emotional support.
- We have set up a Food bank at Northfield School.
- We have provided Easter Eggs to the client.

Housing STATs

On average most victims and survivors that come forward are secure tenants of a property, from either Councils or Housing Association.

Most Perpetrators reported to the service are either Homeless (NFA) or are the owner of a property.

The total number referred to SADA for intensive support was

1682

Clients who confirmed having a physical health need:

235

Clients who confirmed having a mental health need:

562

Total number of clients presenting with physical, mental and complex needs:

797

This is an increase of 68.4% in complex needs referrals since our last review.

Total number of male referrals:

159

This is an increase of 14% in referrals since our last review and will continue to rise.

Average number of attendees to the virtual weekly drop-in:

10

Total number of attendees for the Virtual You and Me, Mum course:

14

Total number of video doorbells given to high-risk victims:

50

Between 2022-2023 the SADA service has supported

8

clients with no recourse to public funds.

SADA has heard a total of

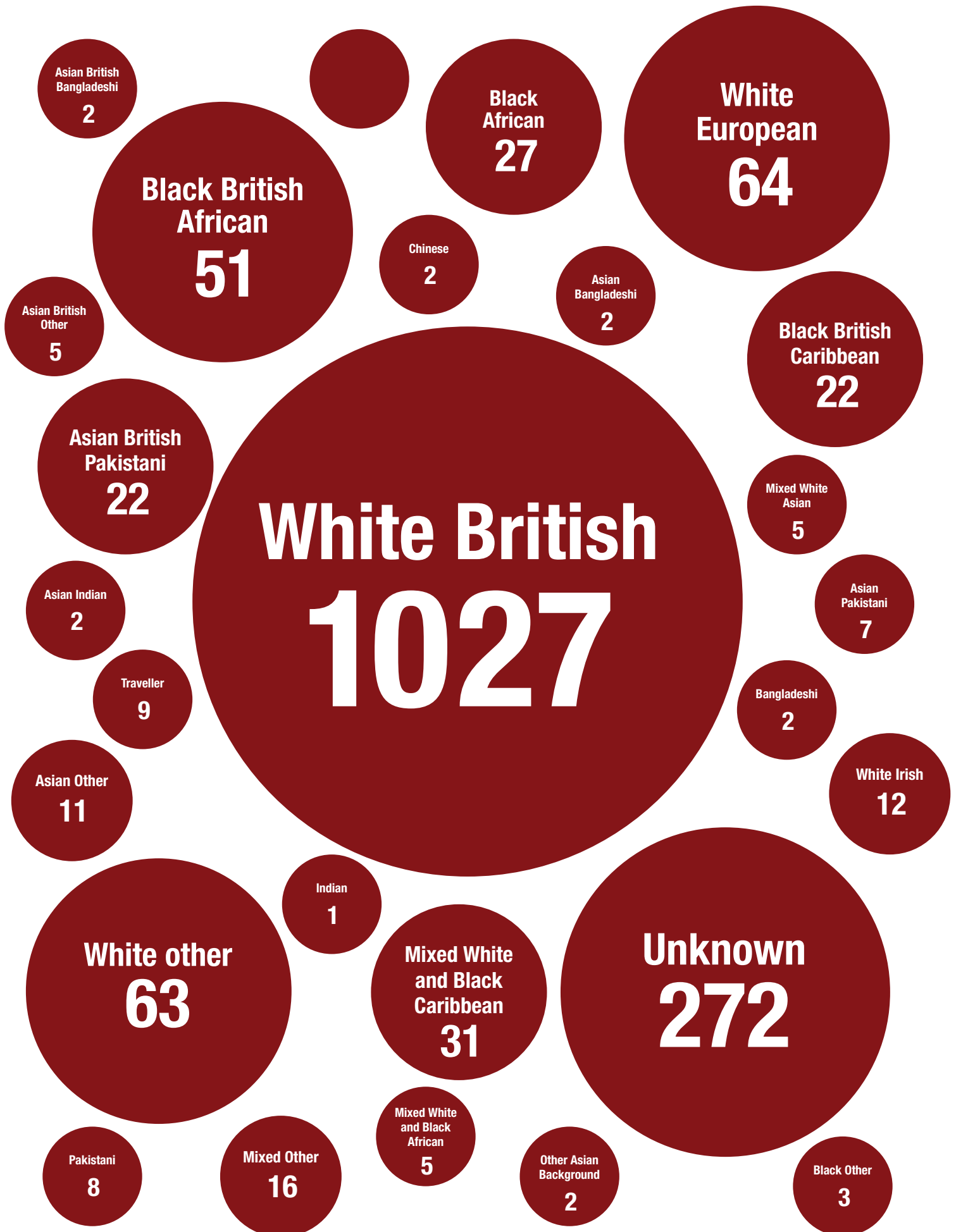
565

clients at the SADAP panel from April 22/23.

SADA Income 22/23

The total income for SADA 22/23 was £468,350.52

Ethnic origins for all areas:



SADA Safe Spaces

The SADA Safe Space provision has increased, and we now have 31 properties since the project began. During the pandemic, the service faced problems being able to secure a safe place for victims and families to flee to safety. To solve this problem, SADA's property portfolio increased from two to 23. This has continued to increase to 31. They can offer a stay of up to six months in our move on properties, supplying all household items, furniture, food and toiletries. These clients are supported by our specialist domestic abuse support workers to move forward with their lives. SADA will continue to expand this provision across Hertfordshire and South Cambridgeshire.

SADA has supported a total of 69 families/ clients in safe space provision. This provided a safe space and support to 102 children.



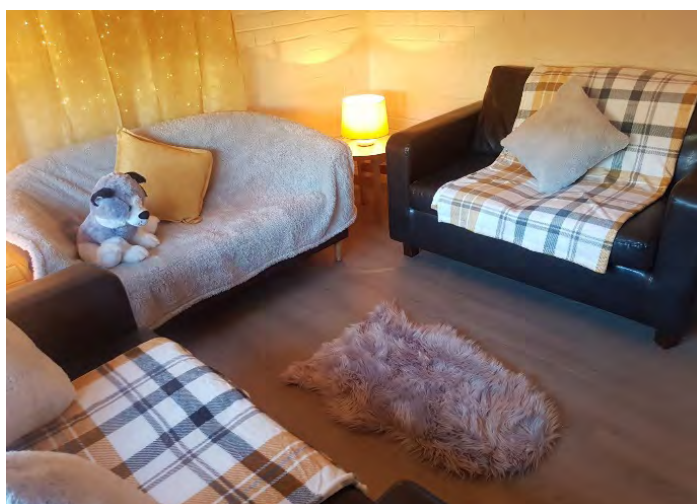
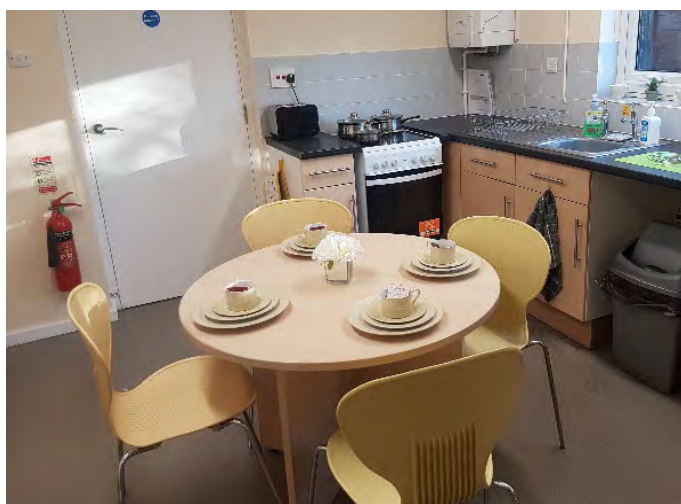
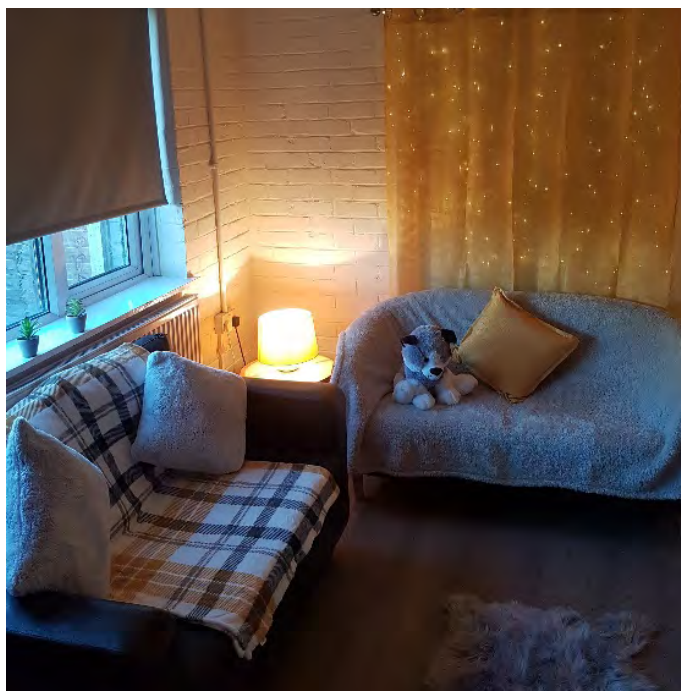
Stevenage Refuge

SADA House has a shared kitchen, dining room, lounge, and large private garden, two toilets and two bathrooms along with two family bedrooms and two smaller bedrooms. SADA House has the capacity to house two families which, as a maximum, could consist of a mum, two children and a baby up to two years of age in the two-family rooms and mum with a child under the age of two for the two smaller rooms. SADA House will take boys up to the age of 11 years old.

Meetings with health visitors and the Family Centre have been arranged and we are pleased to say that they will be regular visitors to SADA House to support new mums and ensure they are engaging with the necessary support services, assisting in getting children into school and accessing the relevant health care. We also currently hold Self Defence and wellbeing classes for these service users every Monday Morning.

There will be an initial three-month licence agreement provided to the SADA House guests, this will then move on to a rolling weekly licence agreement. We have the luxury of having 31 Safe Space Homes we can move guests onto if permanent housing has not been found in that period.

We have accepted 23 people into refuge this year.



SADA Events 22/23

The team looks to raise awareness of the services wherever possible, as well as raise money for the Friends Of SADA Charity. Since April 2022 we have attended events including;

- South Oxley - Everyone active leisure centre Watford
- Rickmansworth - Watersmeet theatre, High St
- Abbots Langley - The Manor House, Gallows
- Landlords Event at the Holiday Inn Stevenage
- SADA Football Match – Marriott’s School
- Ashtree primary school and nursery – Open Day
- This Girl Can in Herts Community Festival for Bedwell
- Phower Event IBIS
- Library Support Event Stevenage
- Watford and Three Rivers DA Forum
- Friends Of SADA Trustees Event
- Stevenage Day
- Council Partnerships MDS Meeting
- Substance Misuse Symposium
- Red Kite what were you wearing Exhibition at the Howard Centre in Welwyn
- IMSA Consultation Workshop
- Beacon Herts Victim Awareness Conference
- Hitchin Priory Rotary Club
- The Church of Jesus Christ of Latter-day Saints – International Women’s Day Event
- Hertfordshire University Criminal Justice & Criminology Careers Fair
- HPFT’s WEPROTECT App Launch & Domestic Abuse Conference
- SADA Women’s Centre Opening
- SADA Landlords Event 2022



SADA Training

SADA has continued to spread its awareness and support services across Hertfordshire. It is now regularly offering domestic abuse awareness training to partners and local services and can serve the training to the needs of the recipients.

All these sessions include training around The DASH risk assessment tool, Safety planning and guidance around the new Domestic Abuse Bill. We have run several successful sessions in the last quarter.

Total number of completed domestic abuse awareness and champions training sessions.

22 Training Sessions

Total of 249 attendees

SADA also offers Modern Slavery Introduction and Awareness training alongside our Modern Slavery Services.

We have trained 164 professionals externally.

SADA Virtual and Face to Face Drop In services

We have been running our Virtual Drop-in service for a few years now and it is very well established. We meet every Friday from 10.30 to 11.30am in a very informal meeting. We discuss various things, and we share various lite bite courses around Anxiety, Depression, Control, Healthy Relationships and various other aspects of life potentially effecting a survivor. Our volunteer supports the running of this and our Face-to-Face drop in sessions held at our Women's Centre every other Thursday. These have also become extremely popular recently with clients in the Stevenage area.

As part of our drop in we obtained funding to have a warm space which enables us to have a small food bank.



Virtual domestic abuse drop-in service

Every Friday morning from 10.30 - 11.30am

To provide support and advice to victims and survivors, and children living with domestic abuse



For more information, please call 01438 242666 and ask for our Community Safety Team



SADA clients' feedback

Thank you for all your help. I feel like I have known you all my life, like you are one of my close friends. I feel so much happier and free!

Thank you for all your help, I honestly wouldn't have found the strength inside me without your guidance and advice within my situation.

You're a very open, transparent and honest professional and that's something I really do appreciate. You're the most genuine person that has helped me.

Just wanted to say Thank you SO SO much for all your time and kind efforts in supporting me and helping me in my time of need. Really don't know what I would have done without you. I absolutely appreciate you.

Thanks for today I feel like every door is closing on me at the moment and talking to you gave me some hope.

The wonderful Team,
I would like to express my sincere appreciation to you all for allowing me to spend the day with you. Your wonderful team gave me their time, a very limited resource. Thank you!! I must say I felt very welcomed and found the day to be very informative and insightful. Thanks for accommodating me! SADA is doing a great work for our county. We appreciated your service!!

I hope all those who cross your path in your job and in general are as appreciative as I have been to your efforts and just your genuine concern, kind and compassionate nature. I wish more of my professional workers were more like you. I really do. Life would be less stressful.

